

JULY-AUGUST 2023

HOUSE & HOME

COTTAGE

Cool

FEATURING

LES ENSEMBLIERS,
BOLTON, QUE.

LISA MOODY,
LAKE WHATCOM

JAIME DROHAN,
MUSKOKA

MICHELLE HURLEY,
TORONTO

BLANC MARINE
INTÉRIEURS,
MAGOG, QUE.

CORI HALPERN,
TORONTO

**GREAT DECORATING
IDEAS FOR
SUMMER LIVING!**

**The Best Tangy Lemon Ribs
From Chris Nuttall-Smith**

CONDO OF THE MONTH

Simply FABULOUS

Interior designer Cori Halpern injects vibrant colour and pattern into a clean-lined, modern space.

Interior design CORI HALPERN
Photography VIRGINIA MACDONALD
Text SIMONE OLIVERO



Cori custom designed most of the furniture with curved shapes and colours that nod to a mid-century modern aesthetic. *Custom sofas, coffee table and pouf*, Cori Halpern Interiors; *chair upholstery fabric*, Kravet Canada.



Homeowners Robin (left) and Amelia with Winston, their Chihuahua mix.



**X CONDOMINIUM
110 CHARLES ST.
E., TORONTO**

DEVELOPER:

Great Gulf

**OCCUPANCY
DATE:**

2010

**NUMBER OF
FLOORS/UNITS:**

IF TORONTO WAS A TREASURE MAP, the X Condominium would mark the spot where art, culture and nightlife come together. It's a big part of what attracted Robin, a software developer, and Amelia, a marketing professional, to the 1,650-square-foot unit, which they purchased in 2021. "I don't drive, so it was really important that we found a place that was central with easy access to transit," says Amelia of the tower designed by architect Peter Clewes, which has nods to Mies van der Rohe. "The layout of the unit was perfect. It had two rooms where we could each set up offices, and a large living, dining and kitchen area, perfect for entertaining." But there was a catch: "We hated the kitchen," says Robin, "and then there was the dark, cavernous bathroom that had to be redone." The couple knew they needed help.

Amelia began researching designers online but was discouraged by portfolios full of stark, white spaces.

44 storeys, 415 units

AVERAGE PRICE:

Approx. \$1,158/
sq.ft.

AMENITIES:

Rooftop garden with outdoor pool, hot tub, barbecue area and gas fireplaces, party room, library, games room, gym with steam rooms

CONDO SIZES:

Approx. 518–1,660
sq.ft.

MAINTENANCE FEES:

Approx. \$0.85/sq.ft.

STORAGE SPACE:

294 storage units were available

PARKING SPOTS:

319 spots were available

PET POLICY:

Dogs and cats permitted

They wanted colour and pattern, something that would show off their fun side — Amelia moonlights as a burlesque dancer. Facebook recommendations led them to Cori Halpern, whose video of her own home won them over. “Cori seemed like a colourful person, and she had a home we could relate to,” says Robin. Before they even had possession, Cori got to work.

Robin and Amelia asked Cori to create a fun and inviting space with mid-century modern touches, bold colours and lots of lively pattern. “I wanted to make sure I was bringing the essence of mid-century modern design without making it feel like a movie set,” says Cori. “I started thinking about shapes, colours and vintage pieces that would produce this look.”

Working in a condo meant paying extra attention to sight lines. “The main living area is one big open space, so everything needs to work together,” says Cori. To avoid dealing with the concrete ceiling, Cori left the three main ceiling junction boxes where they were and found statement lighting that would be complementary. “You can take in all of the fixtures at the same time,” says Cori. In the kitchen, an off-centre junction box over the island required custom installation of the linear brass fixture.

Floor-to-ceiling windows on two of the walls in the living room also presented a challenge. “We chose fabric that would inject movement into the space,” says Cori. Picking a pattern in the right scale was important. “The Pindler fabric we ended up with looks a little like Japanese tattoo art; we all loved it.”

For the heart of the home — the room that spurred the couple to hire a designer in the first place — Cori created a dream kitchen. “I always knew I wanted to do a two-tone teal kitchen for these two,” she says. “We’re all redheads and we tend to gravitate toward similar hues. The blue palette suits them; they look good in the space.” Robin is particularly drawn to the unique reeded detail on the island, which adds beautiful texture.

Referencing their downtown location, Robin commissioned Toronto graffiti artist Wenting Li to create a mural. “I like both street and pop art,” says Robin. “Amelia often sends me tags from murals she

sees while out walking Winston, and I immediately gravitated to Wenting’s work.” With a Pinterest board showcasing vintage technology and cartoon monsters as inspiration, Wenting created the vibrant mural, which is now a statement in Robin’s office.

“It wasn’t an easy time to be working on a project, especially in a compact condo,” says Cori of the year-long reno that spanned a series of Covid lockdowns. “Robin and Amelia were so gracious and understanding about us taking our time and getting it just right.” They can’t wait to host their first dinner party this summer. “I have two ovens now,” says Amelia. “I’m ready to cook for a lot of people!”

SWIPE LEFT



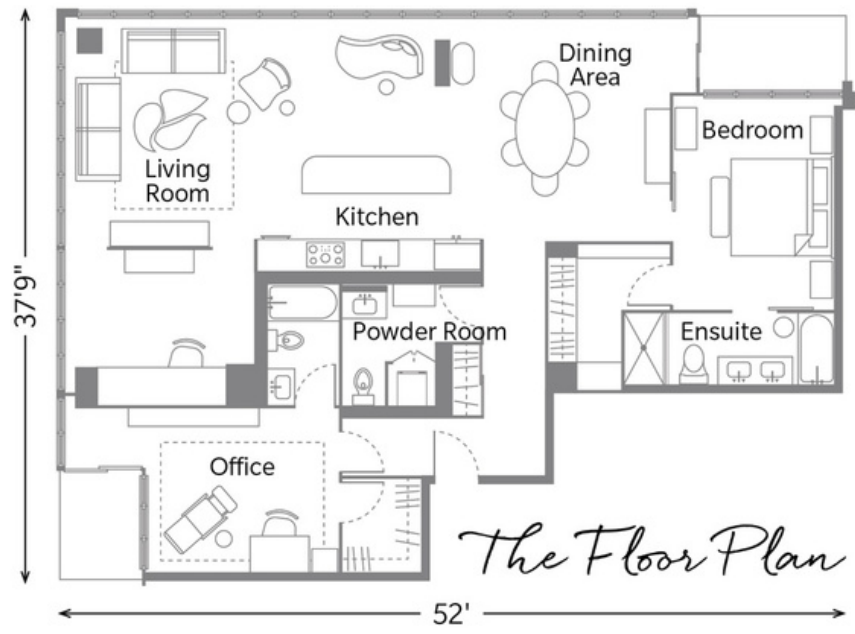
1

“It wasn’t an easy time to be working on a project, especially in a compact condo,” says Cori of the year-long reno that spanned a series of Covid lockdowns. “Robin and Amelia were so gracious and understanding about us taking our time and getting it just right.” They can’t wait to host their first dinner party this summer. “I have two ovens now,” says Amelia. “I’m ready to cook for a lot of people!”

SWIPE LEFT



1. The couple’s one request for the kitchen was “anything but white,” so Cori used Farrow & Ball’s Inchyra Blue and Oval Room Blue to create a two-tone palette. **Cabinets**, Olympic Kitchens; **counters**, Cosentino; **faucet**, Aquavato. 2. “You get the sense from the modern buildings outside that you’re in the heart of a big city,” says Cori. “At night, the buildings are lit up like stars.”



The neon light and custom hand-painted sideboard underscore Amelia and Robin's eclectic tastes. Custom **chandelier**, Lightmaker Studio; **dining chairs**, Cabinet; custom **sideboard**, Morgan Clayhall; **neon light**, Yellowpop.

WHY THEY CHOSE IT

THE LOCATION: "We love this neighbourhood," says Robin. "I'd been keeping my eye on the market, and when I saw a unit that was bigger and not far from our current place, I knew we had to see it."

THE LAYOUT: "In our old home, I worked at the dining table and never really left my 'office,'" says Amelia. "The layout of the new condo allows for two separate workspaces."

THE VIEW: "We have a great southwest view that really showcases the cityscape," says Robin.

THE AMENITIES: "The pool area is beautiful and has barbecues and an outdoor fireplace," says Amelia. "It's secluded with nice trees; kind of like a hotel pool."



The black and white Queen of Spain drapery fabric provides contrast in Robin's office without competing with the wall mural. **Drapery fabric**, Schumacher; **mural** by Wenting Li.



1. A pretty bar cart in a brushed gold tone adds a hit of glamour. **Bar cart**, Union Lighting and Furnishings. 2. The powder room and laundry area features a stone vanity with hammered gold sink and a matching tall cabinet. “The bathroom has a magical feel — like Robin and Amelia,” says Cori. **Counter**, Cava Surfaces; **millwork**, Olympic Kitchens; **cabinet colour**, Teresa’s Green (236), Farrow & Ball. 3. A wood dresser topped with blooms and books warms up the principal bedroom. 4. The chaise is the perfect place to lounge with a drink and take in the cityscape. **Chaise design**, Cori Halpern Interiors; **throw pillow fabric**, Kravet Canada.

“THEY WANTED A SENSE OF ROMANCE IN THE PRINCIPAL BEDROOM”

— Cori Halpern, interior designer

“THEY WANTED A SENSE OF ROMANCE IN THE PRINCIPAL BEDROOM”

— Cori Halpern, interior designer



Cori enveloped the bedroom in a blush-hued wallpaper and matching bolster fabric. **Wallpaper** by House of Hackney, NewWall; **nightstands**, Geovin Furniture; **bench design**, Cori Halpern Interiors.

SEE SOURCE GUIDE

Produced by Stacy Begg/Styling by Me & Mo Creative, Meg Crossley and Morgan Michener